

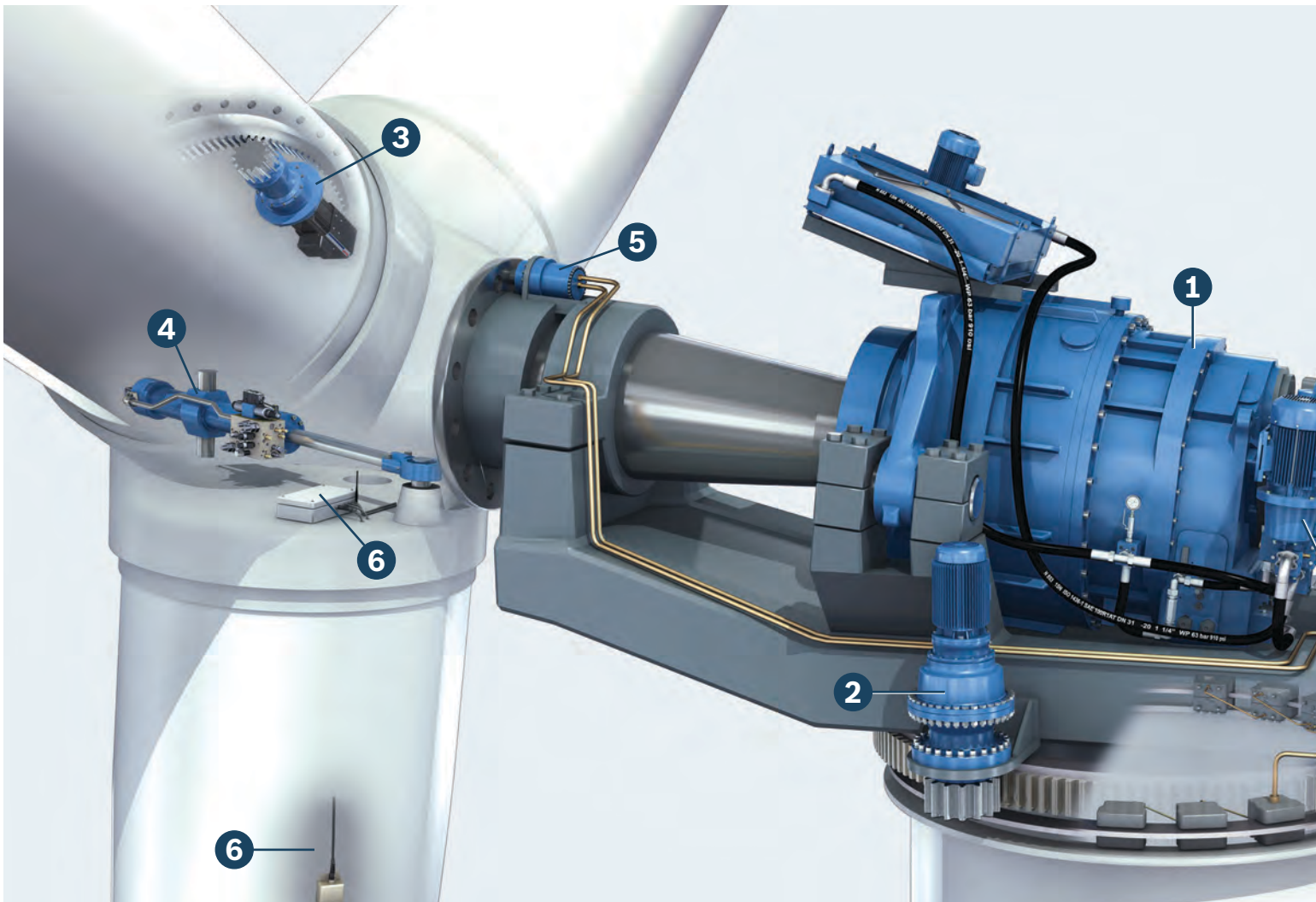
Gearbox and Hydraulics Service for Wind Turbines

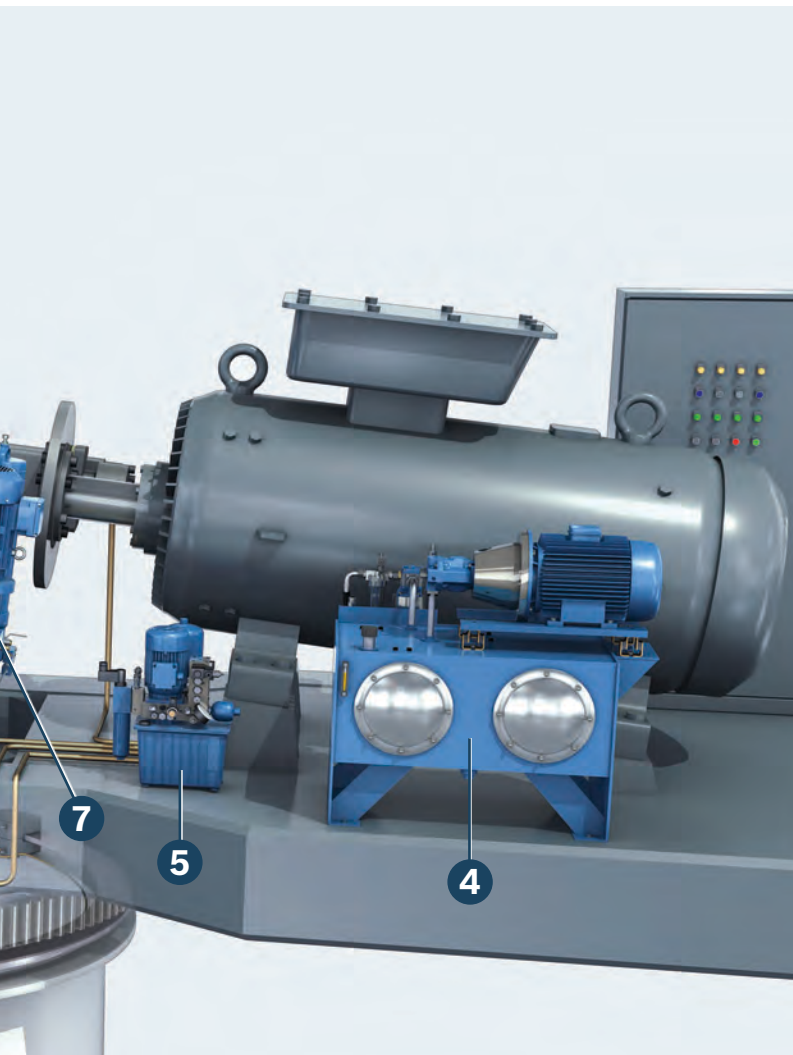


No Matter Where, When or Why. Our Service – At Your Disposal

Rexroth (formerly known as Lohmann & Stolterfoht) develops and produces a variety of gearboxes used in wind turbines: from efficient main gearboxes to precise yaw gears for permanent wind tracking to compact pitch gears for rotor blade adjustment. In addition, as the global market leader in hydraulics, Rexroth offers hydraulic solutions for wind turbine applications: hydraulic pitch controls, drive train brakes, and rotor locks.

Rexroth provides services that include technical support with factory trained and qualified personnel, strategically located stock of commonly needed spares, and complete gearboxes on an exchange program to quickly and cost-effectively support the field population. In addition, we also provide factory repair and field service capabilities using Rexroth trained technical experts with years of field experience in customer service/support.





- 1 Main gearbox
- 2 Yaw drive
- 3 Electromechanical pitch drive
- 4 Hydraulic pitch adjustment
- 5 Drive train & yaw braking system
- 6 Rotor blade condition monitoring
- 7 Lubrication/filtration and cooling systems

Help Desk / Technical Support

Our Helpdesk service experts will be your skilled contact partner when you need fast technical assistance solving a problem on the telephone or when you need assistance in procuring spare parts. When necessary, they will arrange the fastest possible field service calls and help you in processing the repair. The Helpdesk can be reached 24/7 at **1-800-REXROTH**.

Service Product Portfolio

Field Service:

With our skilled team of experienced field service engineers, we offer you on-site support in planning, installation, start-up, application assistance, troubleshooting and fault elimination, and maintenance. Preventive maintenance of the gearbox and hydraulics improves the endurance of your wind turbine installation and its operational efficiency. Our qualified service engineers have comprehensive experience regarding the early detection of faults. They use proven inspection software and perform measurements and tests with the help of modern equipment and systems.

CMS (condition monitoring systems):

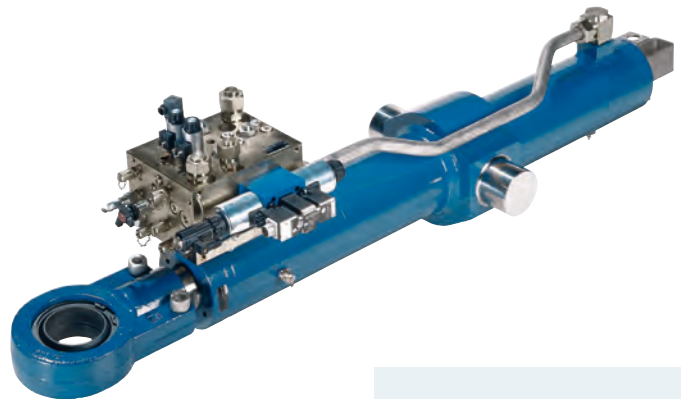
We offer rotor blade monitoring systems for wind turbines.

Spare Parts:

Rexroth service is characterized by speed, competence, efficiency and world-wide logistics. We will furnish genuine spares of OEM quality, spares kits and upgrade sets for existing equipment, even when the equipment is no longer in series production.

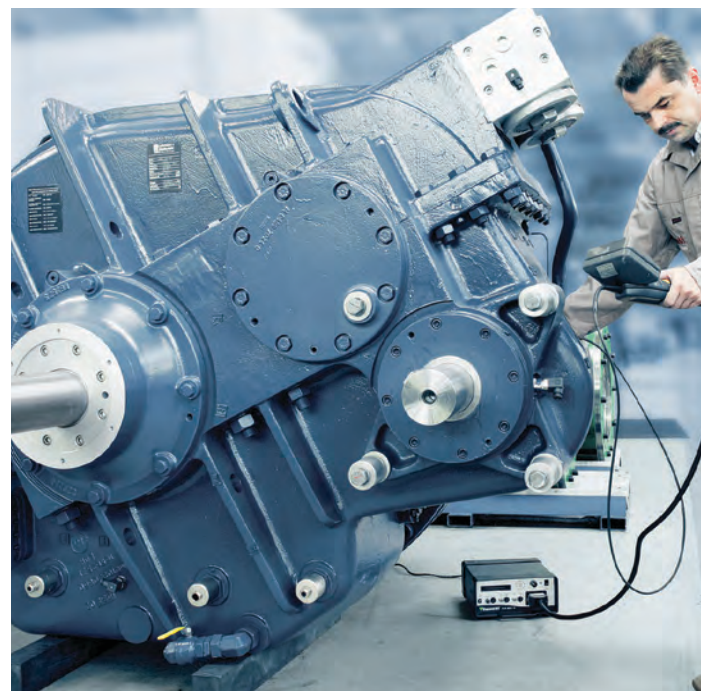
Exchange Gearbox Pool

We offer “off the shelf” exchange units for most of the gearboxes operating in wind farms, thus reducing the turbine downtime.



▲ Hydraulic pitch actuator

▼ Gearbox under inspection





Repairs:

Our comprehensive gearbox and hydraulics design knowledge guarantees that faultless repairs are carried out on a cost-effective basis. When equipment is overhauled or re-manufactured, our expert service engineers make the repair based on original drawings. Prior to delivery, every repaired unit is tested up to full loads according to the most stringent quality criteria with relevant reports being provided.

Training:

We offer customer specific training programs for field service, repair, and spare parts handling.

▲ Subassembly of main gearbox

▼ Final assembly of main gearbox



▲ Service Center located at 551 Telser Road, Lake Zurich, IL

Bosch Rexroth Corporation

Service & Spares
551 Telser Road
Lake Zurich, IL 60047-6705
Telephone (847) 550-9800
Facsimile (847) 550-6300
www.boschrexroth-us.com

Helpdesk 24/7: **1-800-REXROTH**

Bosch Rexroth Service Centers:

USA

Bosch Rexroth Corporation
Hydraulic Sales & Service
1520 Selene Drive, Suite 104
Carrollton, TX 75006
Telephone (972) 245-6718
Facsimile (972) 242-2850

Bosch Rexroth Corporation
Hydraulic Sales & Service
2300 City Line Road
Bethlehem, PA 18017-2131
Telephone (610) 694-8300
Facsimile (610) 694-8467

Bosch Rexroth Corporation
Hydraulic Sales & Service
106 Southchase Court
Fountain Inn, SC 29644-9018
Telephone (864) 967-2777
Facsimile (864) 967-8900

Germany

Bosch Rexroth AG
Renewable Energy
Manessmannstrasse-29
58455 Witten, Germany
Telephone +49 2302 877-213
Facsimile +49 2302 877-335
wind-gears@boschrexroth.de
www.boschrexroth.com/windenergie